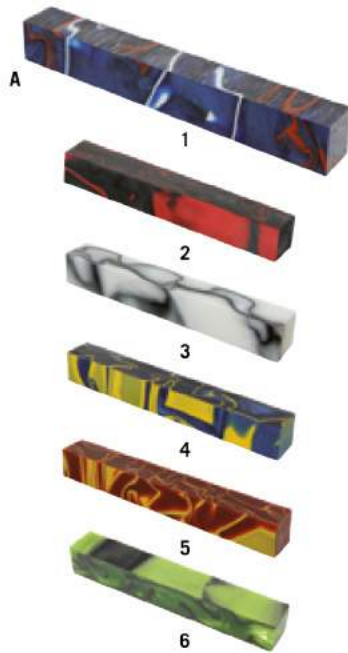


# ΑΚΡΥΛΙΚΑ - ΚΕΡΑΤΑ

Vibrant and colourful:

Acrylic is an excellent material to work with, as well as being resistant to scratching, weather and ageing. Even medium-concentration acids and bases cannot damage it. Compared to polyester, it is much more stable and heat-resistant. An optimum finish is achieved by using a polishing paste after wet sanding with micro-mesh.

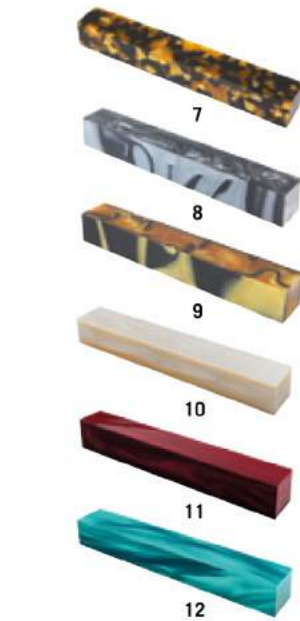


## A ACRYLIC PEN BLANKS

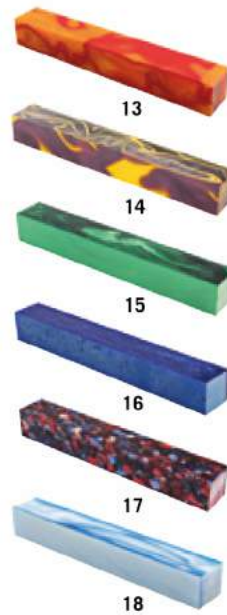
Ideal for writing utensils and minor turning work. Since acrylic has good stability, it can be processed without a sleeve if the wall thickness is sufficient.

150 x 20 x 20 mm

- 1 blue/red/white  
No. 831386
- 2 grey/red  
No. 831385



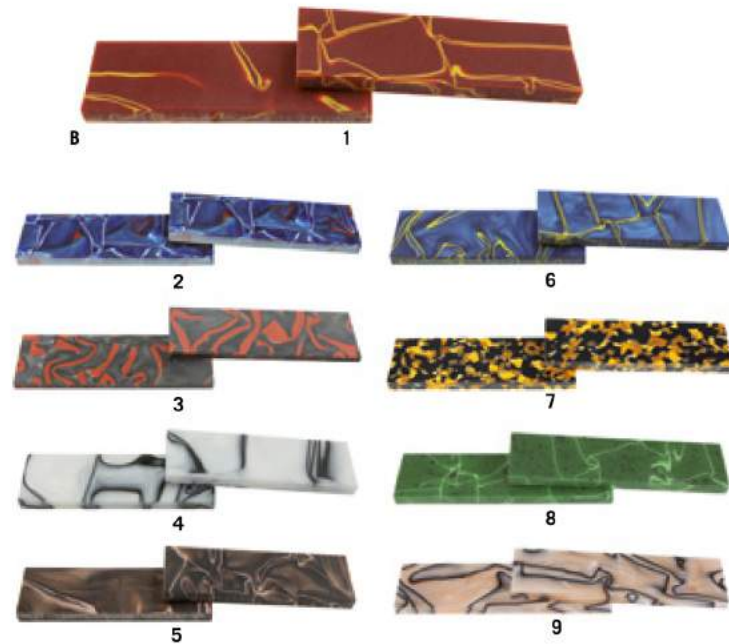
- 3 mother of pearl/black  
No. 831459
- 4 ocean blue/yellow  
No. 831457
- 5 red/yellow  
No. 831456
- 6 acid green/black  
No. 831439
- 7 amber/black  
No. 831438
- 8 carbon  
No. 831594



- 9 gold/black  
No. 831596
- 10 ivory pearl  
No. 831597
- 11 ruby pearl  
No. 831598
- 12 turquoise pearl  
No. 831633
- 13 orange/red  
No. 831634
- 14 violet/yellow  
No. 831791



- 15 green pearl  
No. 831785
- 16 arctic blue ice  
No. 831786
- 17 nebular  
No. 831787
- 18 sky blue pearl  
No. 831788
- 19 magenta pearl  
No. 831789
- 20 gold glitter  
No. 831790



## B ACRYLIC HANDLE SCALES, PAIR

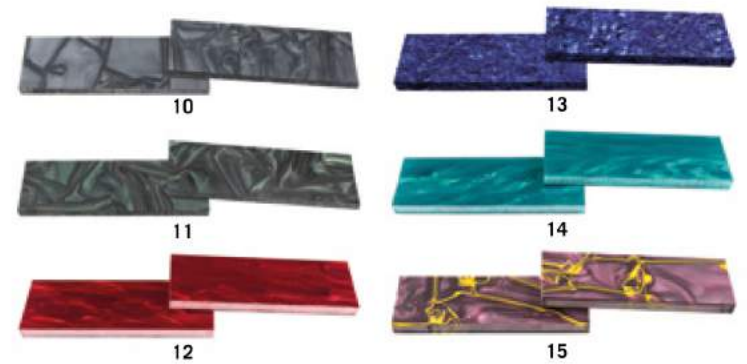
125 x 40 x 9 mm

- 1 red/yellow  
No. 831460
- 2 blue/red/white  
No. 831388
- 3 grey/red  
No. 831387

- 4 mother of pearl/black  
No. 831463
- 5 chocolate  
No. 831462
- 6 ocean blue/yellow  
No. 831461
- 7 amber/black  
No. 831449

- 8 jade  
No. 831448
- 9 salmon mother of pearl/black  
No. 831447
- 10 carbon  
No. 831428
- 11 jungle  
No. 831429

- 12 ruby pearl  
No. 831610
- 13 blue vein  
No. 831611
- 14 turquoise pearl  
No. 831612
- 15 violet/yellow  
No. 831792



## Raffir® Stabilised Woods

In the stabilising process, the wood is filled with a specially developed acrylic resin in a high-pressure vacuum treatment. The stabilised wood is extremely resistant, hardly absorbs any moisture and is thus very hygienic, washable and warp-free (no shrinking or expanding). You can work it with conventional tools without any problems. Weight and material density similar to tropical hardwood. Produced in Denmark.



**D** RAFFIR® STABILISED BOG OAK  
Bog oak wood comes from oak logs that lay airtight under sand or mud in bogs for thousands of years.  
120 x 40 x 25-30 mm  
**No. 831489**



**E** RAFFIR® STABILISED SPALTED BEECHWOOD  
Spalted beechwood with an intensive pattern caused by fungal infestation.  
Natural colour  
120 x 40 x 25-30 mm  
**No. 831495**



**F** RAFFIR® STABILISED SPALTED BIRCH WOOD  
Spalted birchwood with intensive pattern caused by fungal infestation.  
120 x 40 x 25-30 mm  
**No. 831490**

**G** RAFFIR® STABILISED POPLAR BURLS, BLACK  
From roots or burls. Fascinates with its extraordinary pattern.  
120 x 40 x 25-30 mm



1 Red **No. 831493**  
2 Natural **No. 831491**  
3 Black **No. 831494**  
4 Blue **No. 831760**



**H** RAFFIR® STABILISED PLANE TREE, SNAKE CUTS  
Attractive and unique markings reminiscent of reptile or fish skin.

120 x 40 x 25-30 mm  
1 Blue **No. 831764**  
2 Black **No. 831765**



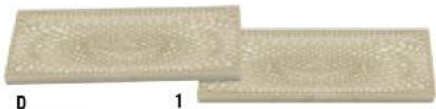
**I** RAFFIR® STABILISED PLANE TREE, CROSS CUTS, BLACK  
The markings remind of fossil corals or mammoth molars.



120 x 40 x 25-30 mm  
1 Blue **No. 831766**  
2 Black **No. 831767**

## Juma/Elforyn

Universal material, e.g. for creating artwork, jewellery, knife handles and inlays, right through to artistic turnery. This versatile material is composed of mineral base materials and resin components and allows very fine surfaces with a pleasant surface feel. Excellent for drilling, sawing, turning, grinding and polishing and unaffected by finishes. Resistant to all commonly used detergents, oils, greases, medium-concentration acids and bases. Ultra-hard surface and little abrasion. Very low water absorption. Thermo-formable in hot water.



**D** 1



2



3

**D** JUMA HANDLE SCALES, PAIR  
Unique material structure with 3D reptile skin effect.  
120 x 40 x 10 mm

2 Golden Dragon  
**No. 831470**

3 Carbon  
**No. 831768**

1 Ivory Snake  
**No. 831472**



**C**

**C** JUMA/ELFORYN  
Natural ivory grain structure and look, permanently light-fast, no yellowing. Allows translucent and fluorescent effects.  
120 x 40 x 30 mm  
**No. 831476**

Price per piece



**E** JUMA BLACK  
Homogeneous, deep-black material structure.  
120 x 40 x 10 mm  
**No. 831475**  
120 x 40 x 30 mm  
**No. 831474**

Price per pair



**E**



## Alternative Ivory Made of Polyester

The high-grade alternative ivory made of polyester comes astoundingly close to real ivory, which derives from a protected species. The colour and fine grain give the material a natural appearance. The alternative ivory is good to work with and can be polished to a high gloss finish.



A

**A ALTERNATIVE IVORY, HANDLE SCALE**  
254 x 35 x 6 mm  
**No. 831415**  
254 x 35 x 3 mm  
**No. 831414**

### B ALTERNATIVE IVORY, BLOCK

Ideal for buttons, jewellery, knife handles with a hidden or full tang and for making musical instruments.  
130 x 35 x 25 mm  
**No. 831172**



B

### A PAKKA WOOD HANDLE SCALES, PAIR

Pakka wood is the collective term for impregnated veneers which are laminated under high pressure. If used for knife handles, the shape of the handle brings out the different wood layers which results in an attractive look. Our blocks are made from coloured birch veneers which are completely saturated with synthetic resin. This procedure makes the material water-resistant and easy workable. Can be durably glued to metal tangs with epoxy glue.  
120 x 35 x 8 mm

- 2 *Dark Brown*  
**No. 719564**
- 3 *Light Brown*  
**No. 719852**
- 4 *Green*  
**No. 719850**
- 5 *Burgundy*  
**No. 719851**



Price per pair

1 *Black*  
**No. 719563**

### B PAPERSTONE, HANDLE SCALES

Ideal for knife handles  
Paperstone is a product made from 100 % recycled paper which has been saturated with natural resins. The paper-resin mixture is then pressed together under high pressure and heat. This results in a material that is water- and UV-resistant and heat resistant up to 180 °C. It can

be worked with normal woodworking tools and glued with epoxy glue.  
Food-safe.  
Dimensions  
130 x 36 x 6.1 mm  
**No. 831244**  
130 x 36 x 10 mm  
**No. 831245**

A



B

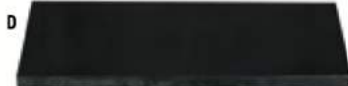


## Micarta

Micarta is one of the most favoured handle materials in knife making - even for fine collector's knives. There are good reasons for this: Micarta is produced using a special high pressure procedure which combines absorbent material (cellulose material, linen etc.) with epoxy resin. The resulting material is almost indestructible and resistant against oils and chemicals. Paper Micarta feels slip free and very comfortable in the hand, even under wet or cold conditions. The material can be easily refined by applying scrimshaw, engraving and carving.



**C PAPER MICARTA, WHITE**  
Tough and elegant  
Ideal for applying scrimshaw, base material paper.  
254 x 38 x 3 mm  
**No. 800348**  
254 x 38 x 6 mm  
**No. 800349**  
254 x 38 x 10 mm  
**No. 720043**



**D PAPER MICARTA, BLACK**  
Tough and elegant  
Ideal for applying scrimshaw, base material paper.  
254 x 38 x 3 mm  
**No. 720044**  
254 x 38 x 6 mm  
**No. 720045**  
254 x 38 x 10 mm  
**No. 720046**



**E LINEN MICARTA, BLACK**  
Very fine structure, made of numerous layers of linen.  
254 x 38 x 3 mm  
**No. 831409**  
254 x 38 x 6 mm  
**No. 831410**



► Slight colour variations are possible.

**F CANVAS MICARTA, BLACK**  
Made of numerous layers of canvas.  
254 x 38 x 3 mm  
**No. 831417**  
254 x 38 x 6 mm  
**No. 831418**

**G CANVAS MICARTA, GREEN**  
Made of numerous layers of canvas.  
254 x 38 x 3 mm  
**No. 831423**  
254 x 38 x 6 mm  
**No. 831424**  
254 x 38 x 9.5 mm  
**No. 831425**

### H VULCANIZED FIBRE

Vulcanized fibre is a composite material made from paper. It is ideal as a layer between tang and handle materials to enhance appearance.



250 x 130 x 0.4 mm	black		<b>No. 719641</b>
250 x 130 x 0.4 mm	rust-red		<b>No. 719642</b>
250 x 130 x 0.8 mm	black		<b>No. 719577</b>
250 x 125 x 0.8 mm	red		<b>No. 719643</b>
250 x 130 x 0.8 mm	white		<b>No. 719578</b>
250 x 130 x 0.8 mm	rust-red		<b>No. 719579</b>
250 x 125 x 1.0 mm	blue		<b>No. 719644</b>
250 x 125 x 1.0 mm	yellow		<b>No. 719645</b>
250 x 125 x 1.0 mm	green		<b>No. 719646</b>

H





# KEPATA

Horn can be worked relatively easily by sawing, sanding, turning or carving, it polishes well and can be reshaped when it is heated. Unlike plastic, horn is non-static, regulates moisture well and is gentle on the skin.



**D BUFFALO HORN TIP**  
Polished water buffalo horn tips, suitable for bow tips, jewellery, furniture handles and other small objects.  
Overall length 60-70 mm  
Ø 20-25 mm  
**No. 831033**



**H COLOURED COW HORN, PLATE**  
The vividly structured horn of the Indian and African cow (*Bos Indicus*) is a fantastic natural material. It is easy to work by turning, carving, sanding or steam bending to make vessels, knife handles, musical instruments, inlays or other unique objects.  
Sanded and polished.  
100 x 50 x 3-4 mm  
**No. 831058**



**E BUFFALO HORN TIP PIECE**  
These especially dense horns from African Zebu buffalos are ideal for amulets, brooches, buttons, bowls, spoons, knife handles, pipe mouthpieces and many other objects.  
Completely solid tip pieces.  
Overall length 150-200 mm,  
Ø 30-40 mm.  
Weight 70-250 g  
**No. 832173**  
**No. 832174**



**I COW HORN PLATE**  
Plates made from Norman cow horn with steam heating and pressing. Due to their lively yellow-brown pattern and transparency, they look just like (protected) tortoise shell. Suitable for intarsia, restoring (in place of tortoise shell), jewellery and lighting objects.  
Thickness 4-8 mm  
Weight 100-250 g  
**No. 832170**  
**No. 832171**  
**No. 832172**  
**No. 832180**



**A RAMS HORN, PAIR**  
Spiral-shaped horn pairs from semi-wild Pyrenees sheep. Its wavy pattern makes it not only suitable for decorative objects, but also for craft applications, e.g. for

handle scales or jewellery. Available in pairs only (taken from the same animal).  
Overall length 300 mm  
**No. 831059**



**C STAG BURR**  
The discs from the antler pedicles are used for the finest handicrafts. Traditionally, they are carved and decorate lederhosen and costumes. Using the scrimshaw technique you can create artistic decorative objects with an attractive pedicle shell. Also suitable for inlays and turnery work.  
Height approx. 20 mm.  
Ø 50-70 mm  
**No. 831394**



**D STAG HORN CROWN PIECE**  
Stag horn crowns are rarities especially sought after by scrimshaw artists. Their high density makes detailed work possible, which is in beautiful contrast to the pedicle shell. Also suitable for inlays, small turnery and ornamental items. Base sanded and polished.  
Height approx. 30 mm.  
Ø 50-60 mm  
**No. 831060**



**F WATUSSI HORN SQUARES**  
Horn squares made from African Watussi cattle, ideal for small turnery, jewellery, inlay etc. 75 x 15 x 15 mm  
Colour  
**1 dark No. 831035**  
**2 medium No. 831036**  
**3 light No. 831037**



**J COW HORN PLATE, FLAT, TRANSPARENT**  
The lively markings and translucency make it ideal for inlay work and art and craft objects. In restoration, it can be used as a substitute for tortoise shell.  
160 x 60 x 2 mm  
**No. 831089**



**C OSTRICH SINEWS, 5-PIECE SET**  
Ideal for laminated backings on wooden or composite bows. The lamination increases draw strength and prevents breakage of the bow. Almost unlimited durability when stored under dry conditions. These sinews

are dried gently and so keep their elasticity after drying. 7-9 sinews are adequate for one composite bow.  
Every sinew approx. 10-30 g.  
Overall length 300 mm  
**No. 831247**



**B BUFFALO HORN PLATE, EXTRA LONG**  
Plates made from the extra long, black horns of the Indian water buffalo (*Bubalus bubalis*), a domesticated and not endangered species. The plates are well-

suited for making jewellery, inlay, mouthpieces etc.  
Width approx. 40-60 mm.  
Overall length 350-400 mm  
Thickness 3-4 mm  
**No. 831031**



**E HORNSTRIPS FOR BOWMAKERS INCLUDING OFFCUT**  
In archery language, horn is said to have a »memory«, which means that after strain the material springs back to its original position. Therefore, this raw material is preferred in the making of bows from laminates. The raw material and the direction of the cut are essential for its use in bows. These horn strips from

domesticated water buffalo (*Bubalus bubalis*) are cut from the outer curve of the horn and thus have the correct fibre flow. In addition, our horn has no fibre twists. Offcut included.  
Overall length 600-650 mm  
**No. 831349**



**G BUFFALO HORN ROLL**  
Solid horn roll made from a single piece of buffalo horn, which is easy to turn, carve and grind. A fine material for decorative objects, furniture knobs and knife handles, mouthpieces, buttons or inlays. Black horn with partially white lines.  
Diameter x Overall length  
Ø 8 x 100 mm **No. 832153**  
Ø 20 x 150 mm **No. 832151**  
Ø 10 x 100 mm **No. 832154**  
Ø 25 x 115 mm **No. 832152**  
Ø 18 x 100 mm **No. 832160**



**K BUFFALO HORN PLATE, BLACK, POLISHED**  
The horn of the African water buffalo is a fantastic natural material. It is easy to work by turning, carving, sanding or steam bending. When used as a knife handle, it can be refined with white ornaments using the scrimshaw technique.  
Sanded and polished.  
100 x 50 x 3-4 mm  
**No. 831224**



**A BONE PLATES**  
For making knife handle scales, inlays, jewellery and as a replacement for elephant ivory. Very hard and resistant to wear, easy to sand and finish. Made from thick-walled, sterilized water buffalo bones.  
55 x 18 x 5 mm **No. 831154**  
55 x 18 x 2 mm **No. 831155**  
95 x 32 x 4-6 mm **No. 831156**  
95 x 32 x 2 mm **No. 831157**



**BORMA WACHS**

# Borma Glass 2K



Ειδικό προϊόν με εποξική βάση δύο συστατικών, που χαρακτηρίζεται από εξαιρετική διαφάνεια, κατάλληλο για πλήρωση κοιλοτήτων και ατελειών σε υλικά διαφόρων ειδών και για τοποθέτηση για διακοσμητικούς σκοπούς. Το Borma Glass 2K είναι κατάλληλο για τη συγκόλληση διαφόρων υλικών, μεταξύ τους ή με τον εαυτό του, όπως: ξύλο, γυαλί, μάρμαρο, βαμμένα αντικείμενα κλπ. (Οι άγνωστες επιφάνειες πρέπει να ελέγχονται εκ των προτέρων). Το Borma Glass 2K μπορεί να χρωματιστεί ή / και να χρησιμοποιηθεί ως συνδετικό υλικό με αδρανή υλικά.

Διατίθεται με τυπικό σκληρυντικό που δεν κιτρινίζει.

## ΤΡΟΠΟΣ ΧΡΗΣΗΣ



Ανακατέψτε τη ρητίνη με το επιλεγμένο σκληρυντικό μέχρι την πλήρη ομογενοποίηση, αποφεύγοντας έτσι την ενσωμάτωση αέρα.



Χρησιμοποιείται ως πληρωτικό για κοιλότητες και ατέλειες, το προϊόν αυτοεπιπεδώνεται έως ότου φτάσει στο χρόνο εφαρμογής της πρώτης στρώσης. Για να αποφευχθεί η ελαφρά συρρίκνωση, η κοιλότητα μπορεί να προεπεξεργαστεί με ένα βασικό υπόστρωμα στεγανοποίησης(sealer). Μόλις σκληρυνθεί το Borma Glass 2K προσφέρει πολύ υψηλή αντοχή τόσο στις επιθετικές χημικές ουσίες όσο και στην τριβή. Σε περίπτωση που πρέπει να εφαρμόσετε το Borma Glass 2K σε δύο επόμενες στρώσεις ή εάν σκοπεύετε να το επικαλύψετε, είναι απαραίτητο να τρίψετε με γυαλόχαρτο (με κόκκο από 120 έως 220 και επακόλουθη αφαίρεση της σκόνης) για να εξασφαλίσετε συγκόλληση.



Φινίρισμα: για να αποκτήσετε μια ματ επιφάνεια, συνιστάται να τρίψετε με γυαλόχαρτο με αυξανόμενο κόκκο έως P240 / 320. Για να αποκτήσετε μια επιφάνεια υψηλής στιλπνότητας, ο τελικός κόκκος πρέπει να φτάσει τα P600 / 800.



# Rosin Legnin

## ΕΠΟΞΙΚΗ ΡΗΤΙΝΗ



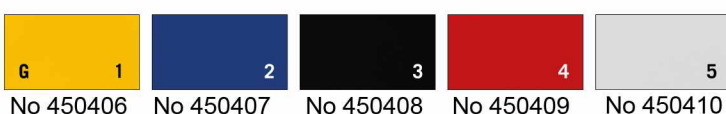
## ΠΕΡΙΓΡΑΦΗ

Εποξική ρητίνη, ιδανική και για εφαρμογές ξύλου. Με ελάχιστο σχηματισμό φυσαλίδων, επιτυγχάνονται καλά αποτελέσματα ακόμη και χωρίς θάλαμο κενού. Υπάρχει επίσης και υλικό διάφανο που εμποδίζει πλήρως τον σχηματισμό φυσαλίδων (αρ. 450415). Η πλήρως σκληρυμένη ρητίνη μπορεί να επεξεργαστεί εύκολα με εργαλεία ξύλου, είναι ιδανική και για τόννο. Μπορεί να βαφτεί με διαφανές ή αδιαφανές χρώμα. Για να μην κιτρινίζει με την πάροδο του χρόνου συνιστάται επίσης η χρήση σταθεροποιητή UV (αρ. 450411). Ανάλογα με το πάχος του στρώματος, η διαδικασία σκλήρυνσης απαιτεί 12-24 ώρες ανά στρώση. Μέγιστο συνιστώμενο πάχος στρώσης είναι 20 mm. Διάρκεια ζωής τουλάχιστον 12 μήνες από την αγορά της συσκευασίας.

## ΠΕΡΙΛΑΜΒΑΝΕΙ

500 gr ΡΗΤΙΝΗ,	250 gr ΣΚΛΗΡΥΝΤΙΚΟ	No 450400
1 kg ΡΗΤΙΝΗ,	500 gr ΣΚΛΗΡΥΝΤΙΚΟ	No 450413
2 kg ΡΗΤΙΝΗ,	1 kg ΣΚΛΗΡΥΝΤΙΚΟ	No 450414

## ΧΡΩΜΑΤΑ ΑΔΙΑΦΑΝΗ



## ΧΡΩΜΑΤΑ ΔΙΑΦΑΝΗ



## ΧΡΩΜΑΤΑ ΜΕΤΑΛΛΙΚΑ

